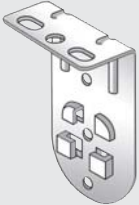


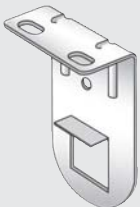
You should have...

First check you've got all the fittings that come with your blind

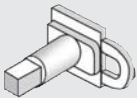
Idle end pin bracket: 1



Chain end bracket: 1



Idle end pin: 1

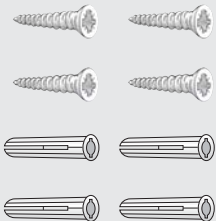


Wood screws: min 4



Screws: 4

Rawl plugs: 4



Blind: 1



Fitting your Roller blind

Before you start, check you have your brackets

Your blind brackets are packed separately at the end of the box. Check you've taken them out before you throw the packaging away.

You can fit your Web-Blinds roller blind in a few straightforward steps. Just do these in order and you'll soon have your new blind up.

Fitting your blind

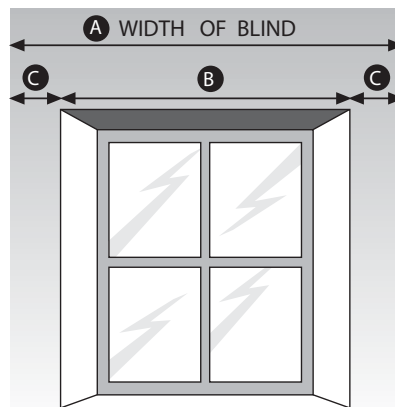
1 Fitting your blind outside the window (exact fitting)

To make sure the centre of the rail is precisely in the middle of your window, the measurements at either end (**C**) need to be the same. To work out **C**:

- measure the width of the window (measurement **B**). Write down the measurement.
- measure the width of the blind (measurement **A**). Write down the measurement.

Take measurement **B** away from measurement **A** and divide the answer by 2 to get measurement **C**.

Now follow steps 2 and 3 then the instructions for **face fixing**.



Fitting your blind inside the window (recess fitting)

You need to decide whether to **face fix** or **top fix** your blind.

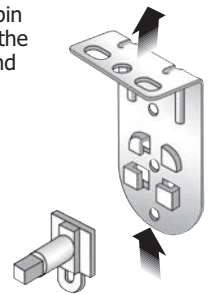
Top fix your blind to the lintel if:

- you have uPVC window frames, or
- there are obstructions like handles

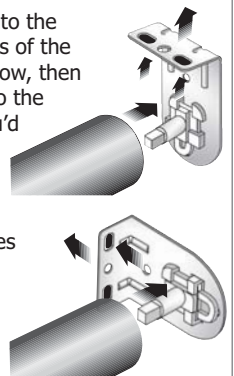
Face fix your blind if:

- you want to fit the bracket to the window frame

2 Slide the idle end pin upwards between the teeth of the idle end pin bracket until it clicks into place.



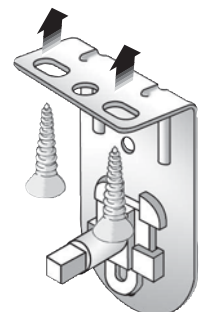
3 Put the brackets into the corresponding ends of the blind as shown below, then move the blind into the position where you'd like it to hang in your window.



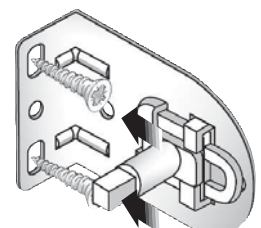
Now mark the position of the holes for drilling. Remember there are 2 holes per bracket

4 Drill 2 holes per bracket where marked and screw the brackets into place.

Top fixing



Face fixing



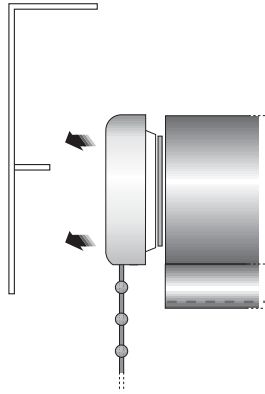
5

Take the idle end pin out of the bracket and put it in the end of the blind. Then insert the blind into the bracket.

**6**

Holding the fully-wound blind, get the chain cap into position with the chain hanging downwards as shown below, and press the cap into the chain end bracket.

Gently pull the chain to raise and lower the blind.



Operating your blind

Operating your blind is easy. Just follow these instructions.

- To raise and lower your blind, use the chain at the side.

Be safe

- Keep all cords and chains out of children's reach.
- Install safety devices such as cleats and cord tidies to keep cords away from children.
- Move cots, beds and other furniture away from blinds

Need help fitting your blind? Call 01274 354 738
9am - 5pm, Monday to Friday and 9am -12pm Saturday